

Employment and jobs report for June 2021



<https://www.gloscareershub.com/>

Contents

- EMSI Jobs postings
- Types of jobs posted
- Top companies posting and skills required
- Claimant count
- Furloughed workers

EMSI LMI via Careers Coach

Please note that the Careers Coach tool which can be found at the Gloucestershire Skills Portal and also utilises up to date EMSI LMI and job postings for Gloucestershire to support you when working with students to explore individual career types. To find out more visit:

<https://www.skillsportalglos.com/career-coach/>

To download an information sheet visit:

<https://drive.google.com/file/d/1JXDSDszS9tZseymiooWMzWjzzlCwThbw/view>

The screenshot shows the homepage of the Career Coach for Gloucestershire. At the top, the gfirst LEP logo is displayed with the tagline 'growing gloucestershire'. To the right of the logo are links for 'Search', 'Login', and a 'Sign Up' button. Below the logo, there are three navigation tabs: 'Assessment', 'Careers', and 'CV Builder'. The main heading reads 'Welcome to Career Coach for Gloucestershire', followed by the subtext 'With live Gloucestershire and national labour market information brought to you by Emsi'. Below this, there are two main content boxes. The first box is titled 'Take Career Assessment' and contains the text: 'Take a Career Assessment to learn about yourself and Career Coach will give you career suggestions based on your interests.' Below this text is a green button labeled 'Take the Assessment'. The second box is titled 'Browse Careers' and contains the text: 'Browse or search for careers and we will give you relevant data on wages, employment, and the training you need.' Below this text is a search bar with the placeholder text 'Search for Careers' and a magnifying glass icon.



Headlines from June 2021 figures



- The Claimant Count in Gloucestershire decreased by 1,105 persons to 14,425 and the rate in June decreased to 3.8%
- Job posting numbers for the month of June were around 34,285 which is an increase of around 500 job postings when compared to May
- Provisional data shows total number of workers furloughed in Gloucestershire as at the 30th June was 14,900 which is down from the May figure of 20,700
- To date Gloucestershire has seen a cumulative total of 112,900 employments supported by the Coronavirus Job Retention Scheme at various times



EMSI job posting numbers



- Job posting numbers for the month of June 2021 were around 34,285 which is an increase of around 500 job postings when compared to May 2021.
- Chart 1 below gives a district overview of total jobs for the month of June, comparing the same month in 2019, 2020 and 2021.
- For Cotswold, Forest of Dean and Tewkesbury, the number of jobs posted in June 2021 exceeds the same month for previous years.



EMSI job posting numbers

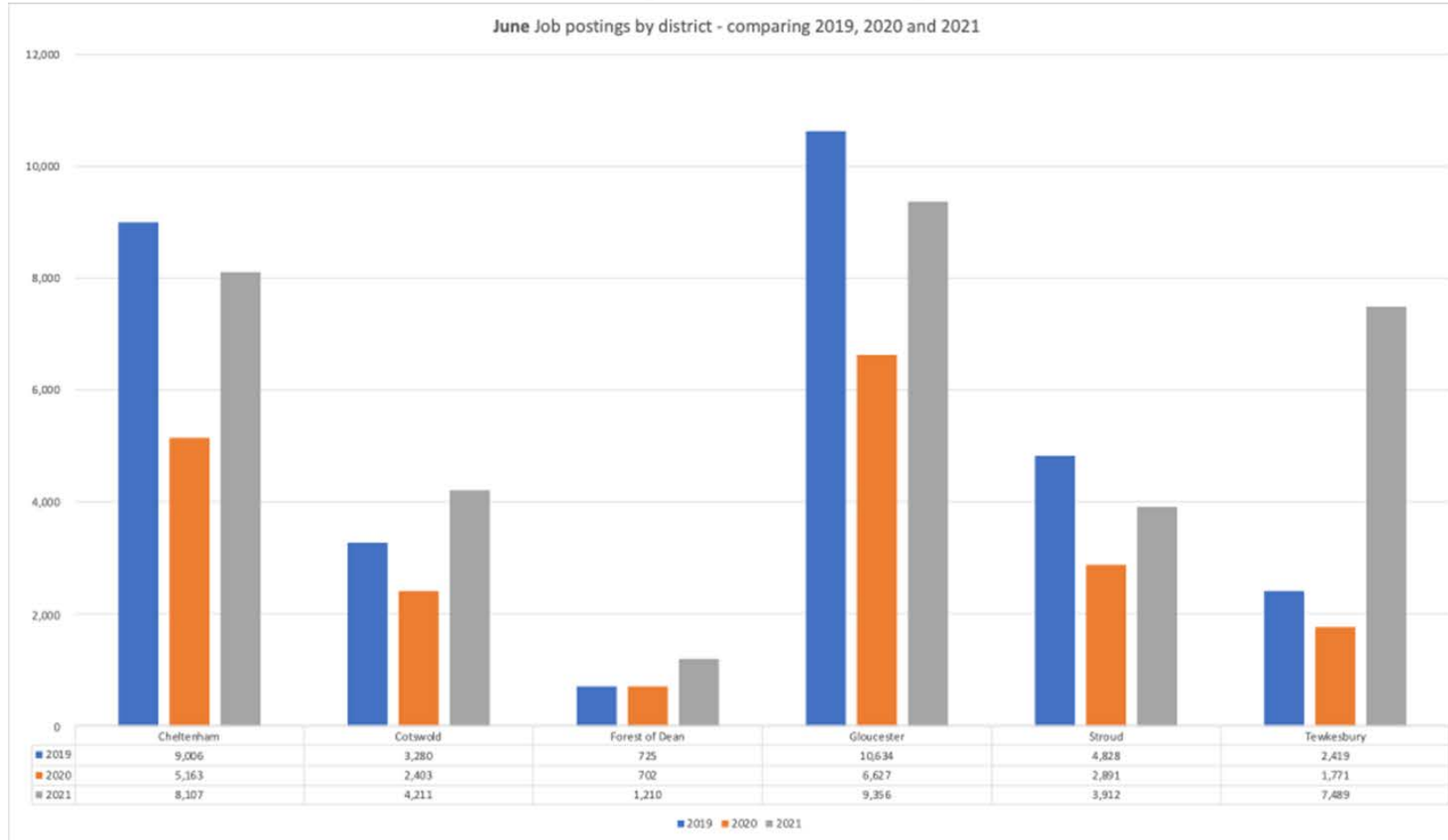


Chart 1: District overview of total jobs in June 2021 when compared with June 2020 and June 2019



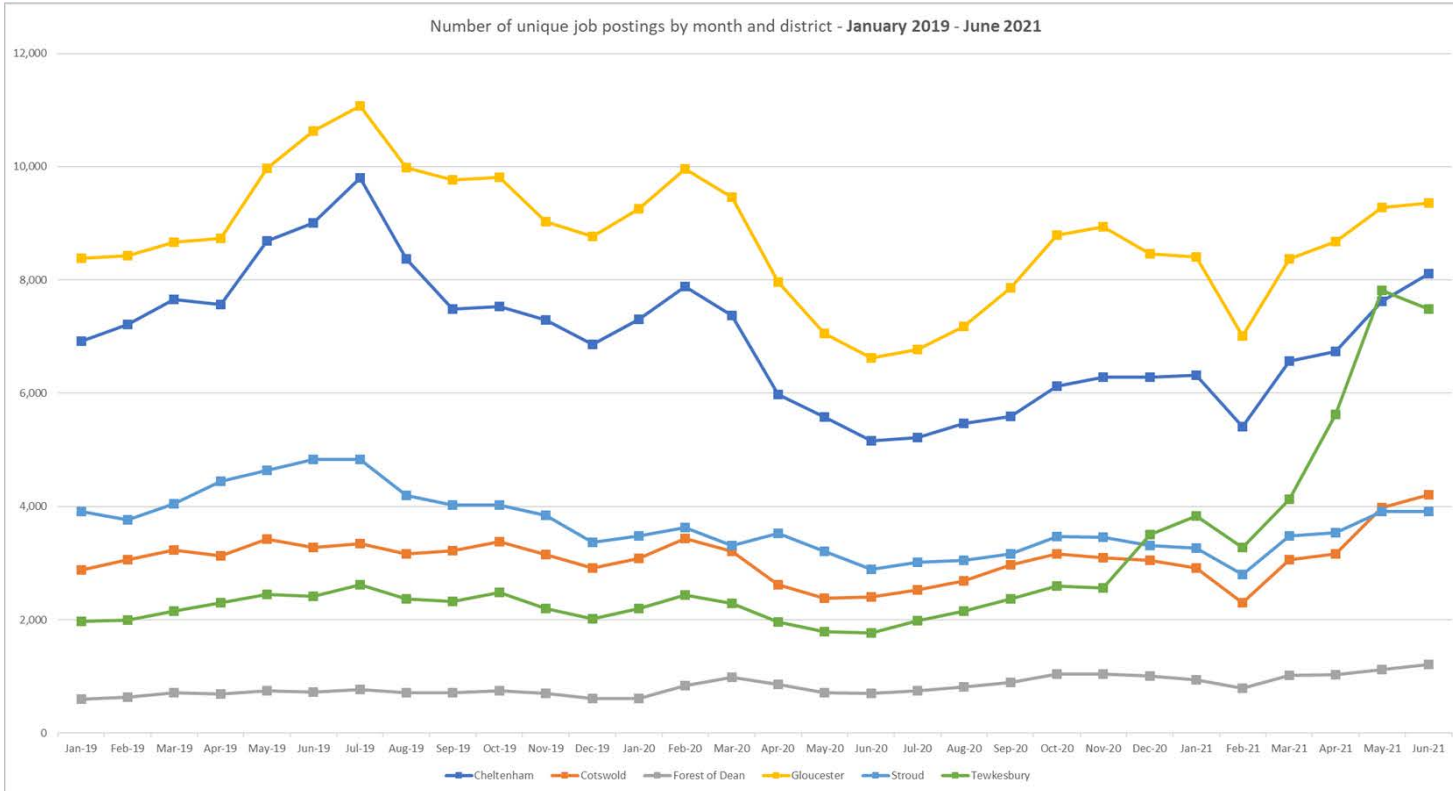
EMSI job posting numbers



- Chart 2 below shows total jobs by district from January 2019 to June 2021, with most districts displaying a similar trend over the past few months.
- However, Tewkesbury job posting numbers have dropped back slightly for the first time since February 2021.



EMSI job posting numbers



Please note – job posting numbers are based on snapshot data taken on the 13th July, numbers are provisional and subject to change. The information is continually being cleaned and validated, but job posting numbers provide a good indication on how the job market is performing.

EMSI delivers real time access to job vacancies from a comprehensive range of sources including job boards, employer sites, newspapers, public agencies etc. Data extraction and analysis technologies mine and code data from each job listing to provide analysis on industries, occupations, skills and qualifications. However, the tool will inevitably not capture all vacancies.

Source: EMSI

Chart 2: Number of job postings by district for the past 12 months



Types of jobs posted



- Chart 3 below shows the net change in the number of job postings by top level occupation (two-digit SOC), comparing May to June 2021.
- As can be seen below, a number of occupations have seen an increase in June when compared to the previous month, but there have also been a number of decreases.
- Research, Engineering and Technology Professionals has seen the largest decrease.
- Meanwhile, Business and Public Service Associate Professionals and Elementary Administration and Service Occupations have seen the largest increases.



Types of jobs posted

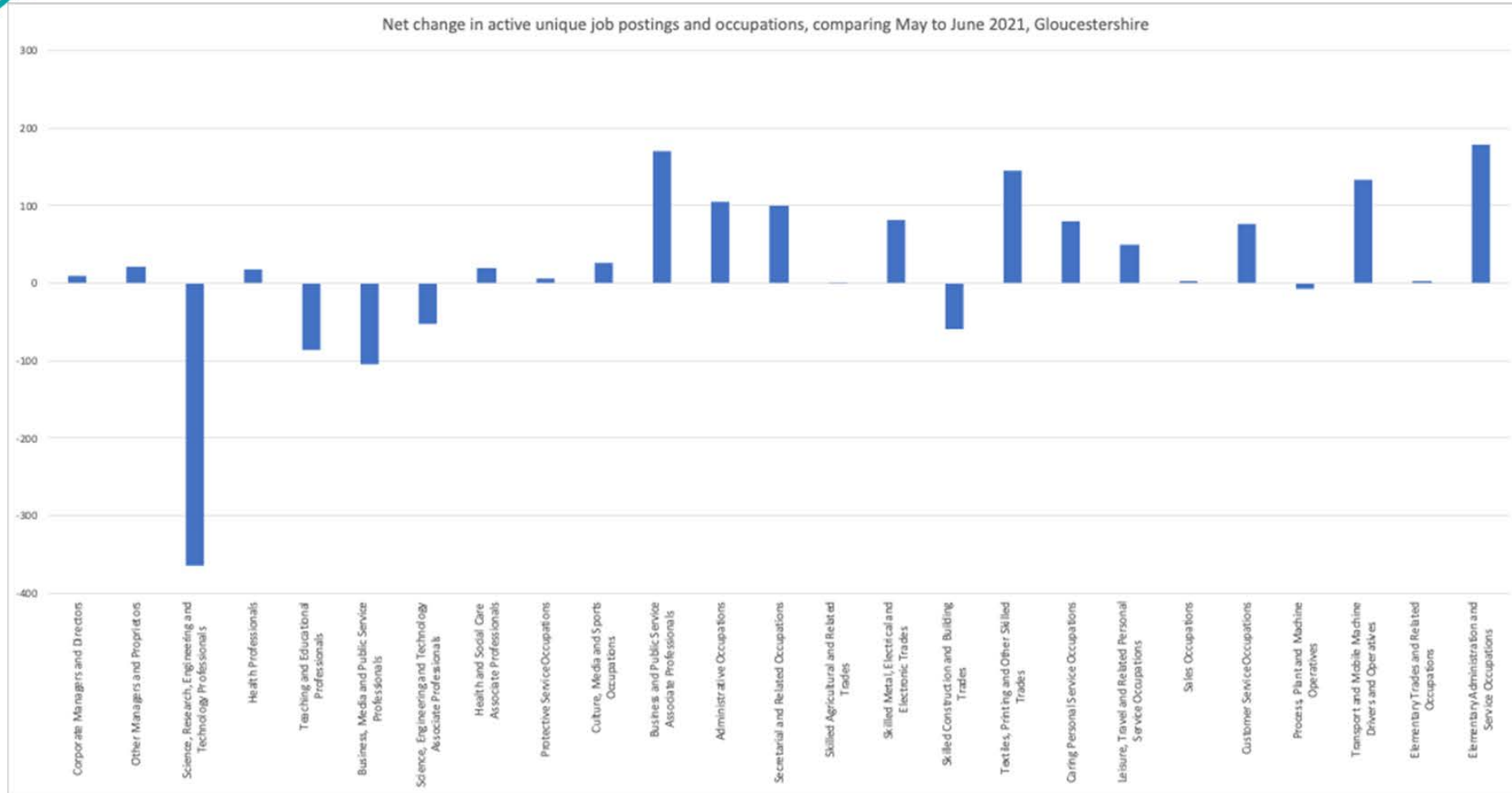


Chart 3: Net change in the number of job postings by two-digit (SOC) code, comparing June 2020 and June 2021.



Top companies posting and skills required (June 2021)



- **The top companies posting jobs in June include**; NHS, Gloucestershire Hospitals NHS Foundation Trust and Gloucestershire Education Department – please note that we have not included employment agencies in top companies posting, employment agencies do however form part of the total jobs posted in the report.
- **Top posted occupations in June**: Programmers and software development professionals, Nurses, Care workers and home carers, and Sales accounts and business development managers.
- **Top posted job titles** include; Support Workers, Warehouse Operatives, Care Assistants, Registered Nurses, and Health Care Assistants.
- **Top hard skills** listed in job postings include; Auditing, Agile Methodology, Warehousing, Key Performance Indicators (KPIs) and Accounting.
- **Top common skills** listed include; Communications, Management, Customer Service, Sales and Enthusiasm.



June Claimant Count



- July saw the publication of the June *Claimant Count figures: Gloucestershire has seen a decrease to 3.8% (the value is expressed as a proportion of residents aged 16-64). The June total now stands at 14,425 compared to the May figure of 15,530 which is a monthly decrease of 1,105 persons. All districts have seen a decrease in the estimated number of unemployed claimants since March.
- The June figure for the South West was 4.2%, England was 5.7% and the UK figure was 5.6%.
- Chart 4 shows the claimant rate for June 2021 in Gloucestershire



June Claimant Count

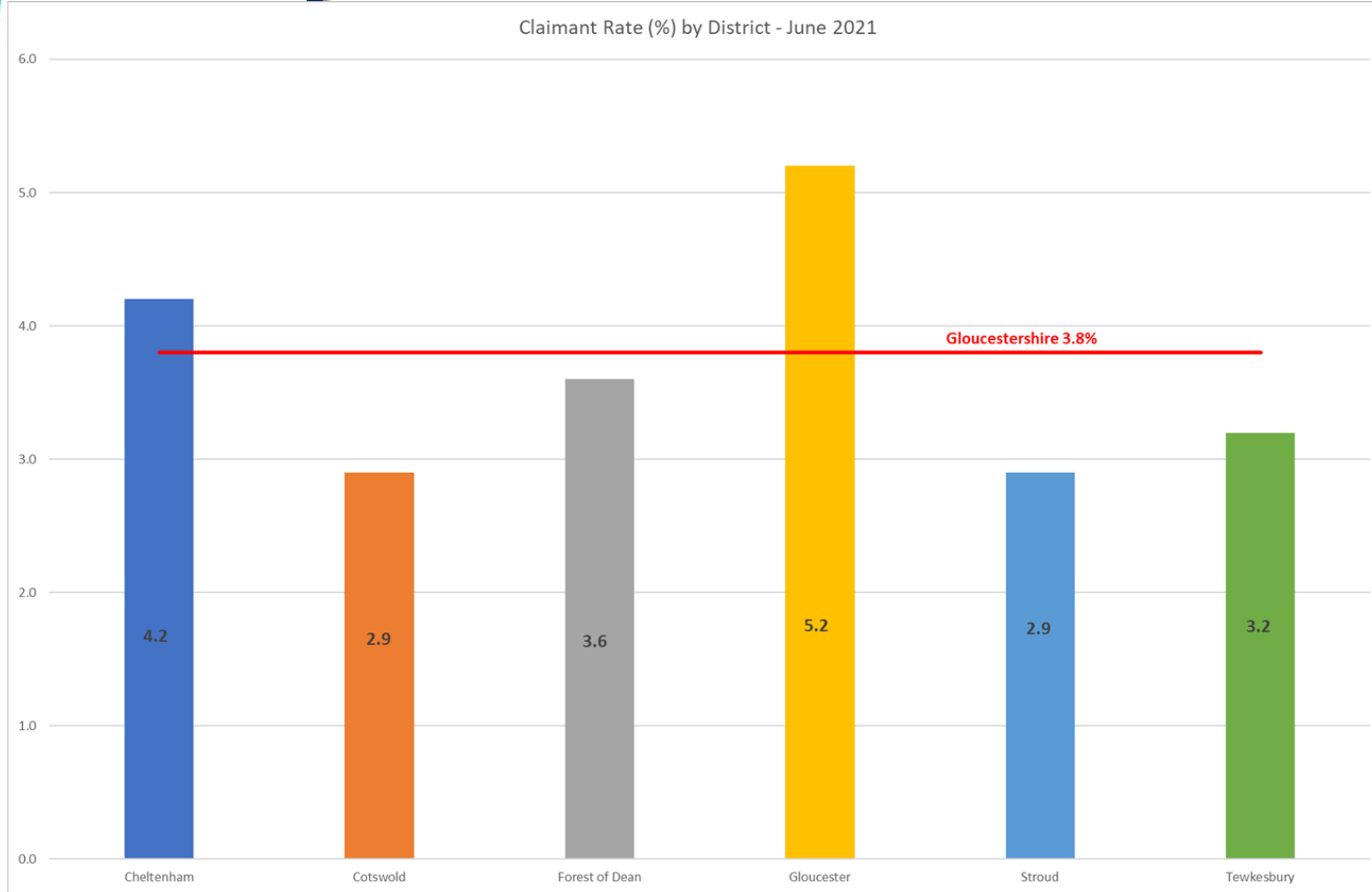


Chart 4: Claimant rate for June 2021 in Gloucestershire



June Claimant Count



- Chart 5 shows the current claimant rate for Gloucestershire at 3.8%, when compared with all six districts, the South West and United Kingdom.
- The rate for Gloucestershire continues to be below that of the UK and South West.



June Claimant Count

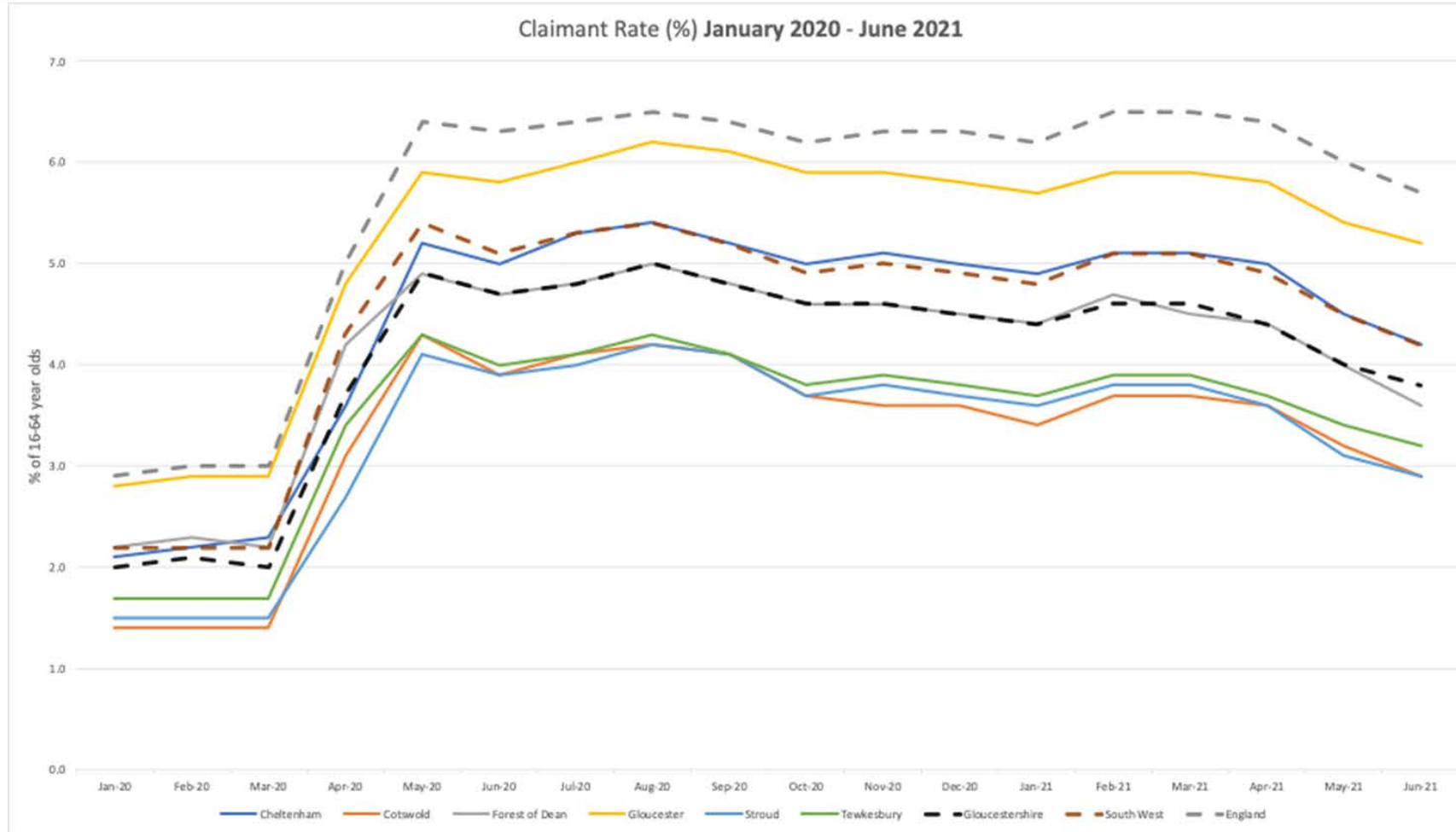


Chart 5: Claimant rate for June 2021 in Gloucestershire compared with South West and UK



Furloughed workers



- Provisional data shows total number of workers furloughed in Gloucestershire as at the 30th June was 14,900 which is down from the May figure of 20,700.
- Also updated this month were the cumulative number of jobs furloughed since the start of the scheme in March 2020, which has now seen a cumulative total of 112,900 Gloucestershire employments supported by the CJRS at various times.
- Chart 5 below shows the district breakdown of workers furloughed at the end of June.



Furloughed workers

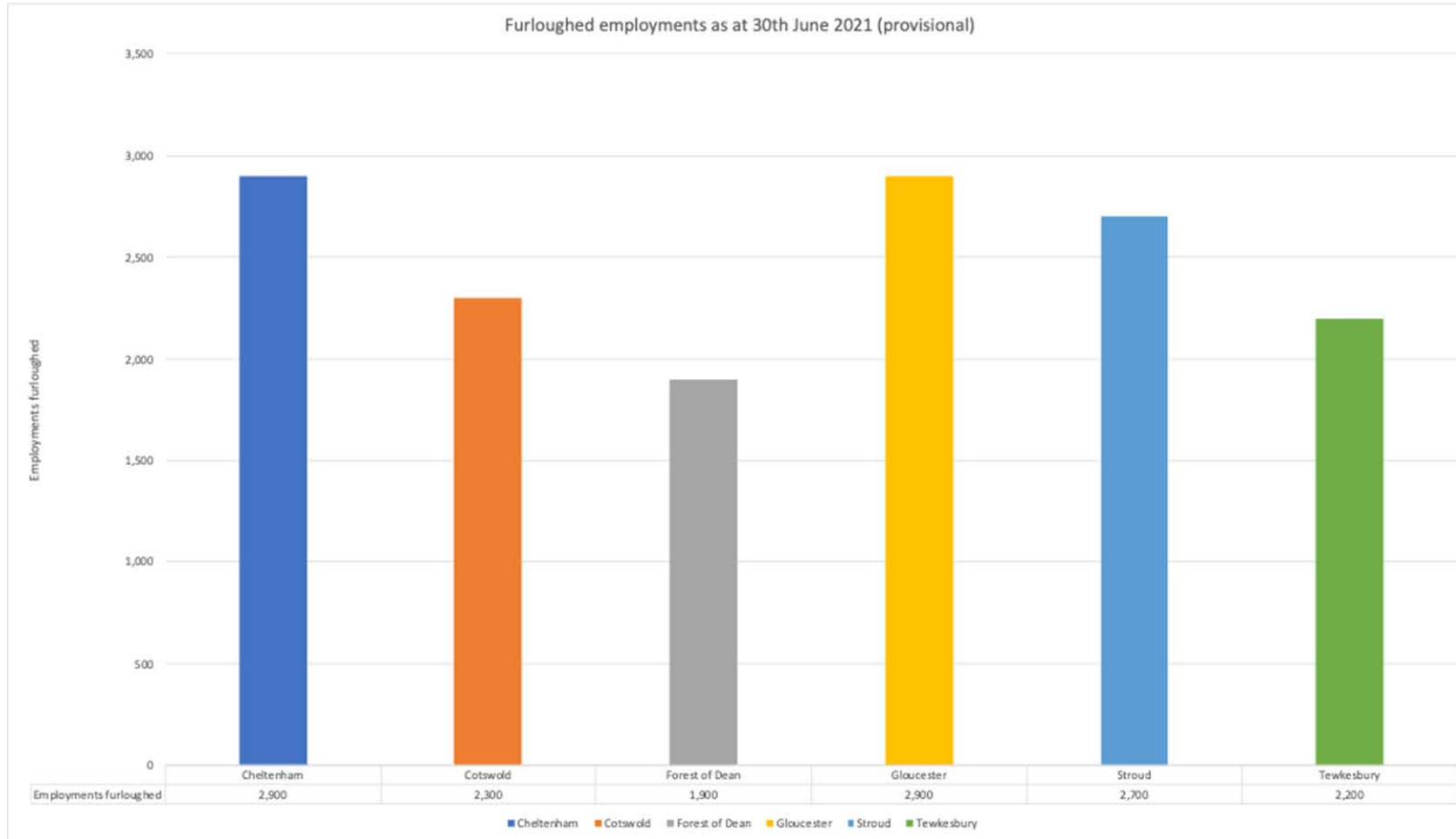


Chart 5: Furloughed employments as at 30th June 2021



Furloughed workers

- Table 2 below compares the June furlough statistics for Gloucestershire against England and the South West

Furloughed employments as at the 30 th June 2021 (provisional)			
Area	Employments furloughed	Eligible employments	*Take-up-rate
Gloucestershire	14,900	275,700	5%
South West	128,100	2,369,400	5%
England	1,554,000	23,881,800	7%

**Take up rate is the percentage of workers furloughed, as a proportion of those eligible employments.*

Table 2: Furloughed statistics for Gloucestershire compared with England and South West as at 30th June 2021



Furloughed workers

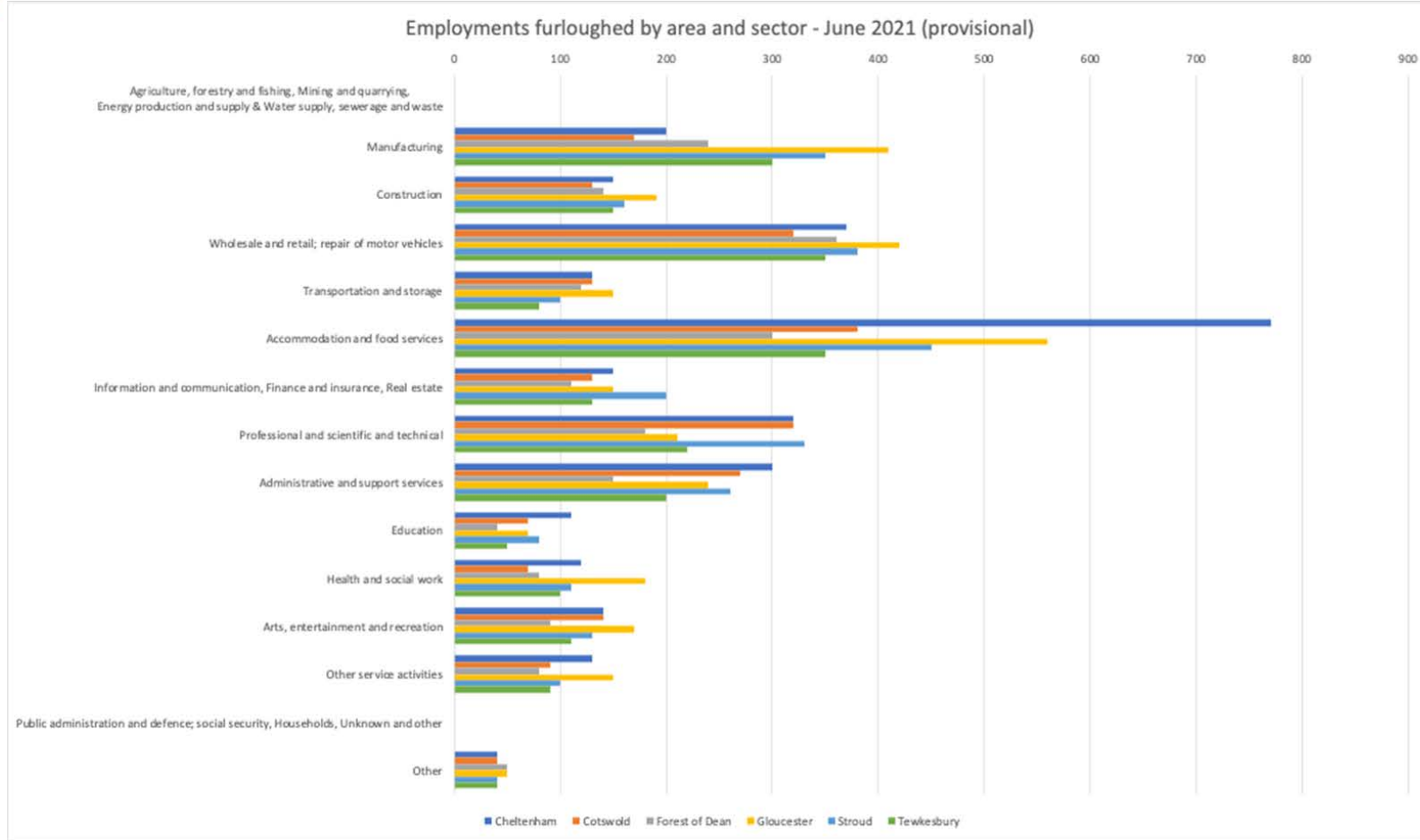


Chart 6 shows the number of furloughed workers the number of furloughed workers by broad sector and by area as at the end of June 2021. The accommodation and food services sector continues to see some of the largest numbers of furloughed employments, but has seen an overall decrease of 3,170 compared to May figures.

Chart 6: Furloughed workers in Gloucestershire



Furloughed workers

Employments furloughed by LA and sector - June 2021 (provisional)	Cheltenham	Cotswold	Forest of Dean	Gloucester	Stroud	Tewkesbury	Gloucestershire
Agriculture, forestry and fishing, Mining and quarrying, Energy production and supply & Water supply, sewerage and waste	0	0	0	0	0	0	0
Manufacturing	200	170	240	410	350	300	1670
Construction	150	130	140	190	160	150	930
Wholesale and retail; repair of motor vehicles	370	320	360	420	380	350	2190
Transportation and storage	130	130	120	150	100	80	710
Accommodation and food services	770	380	300	560	450	350	2800
Information and communication, Finance and insurance, Real estate	150	130	110	150	200	130	870
Professional and scientific and technical	320	320	180	210	330	220	1580
Administrative and support services	300	270	150	240	260	200	1430
Education	110	70	40	70	80	50	430
Health and social work	120	70	80	180	110	100	660
Arts, entertainment and recreation	140	140	90	170	130	110	770
Other service activities	130	90	80	150	100	90	630
Public administration and defence; social security, Households, Unknown and other	0	0	0	0	0	0	0
Other	40	40	50	50	40	40	250

Table 3 shows the number of furloughed workers by broad sector and by district at the end of June 2021

Table 3: Furloughed workers in Gloucestershire



Furloughed workers



- Chart 7 Below compares the number of furloughed workers by sector and district, looking at the net change in furloughed workers in June compared to May.
- There continues to be a decrease in the number of furloughed employments across the majority of sectors, with the wholesale and retail; repair of motor vehicles and accommodation and food services sectors again both seeing the largest decrease.



Furloughed workers

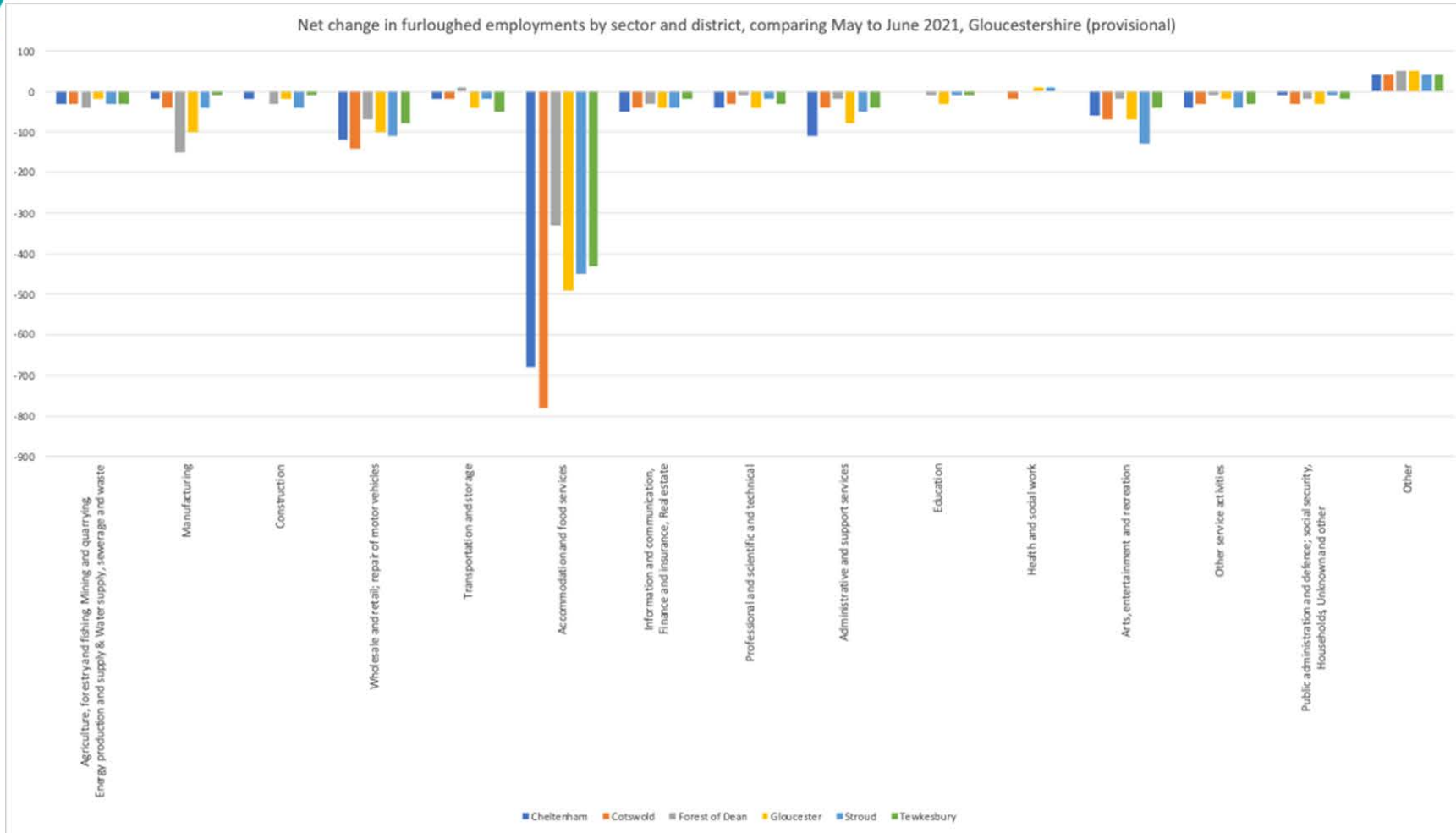


Chart 7 compares the number of furloughed workers by sector and district by looking at the net change in furloughed workers in June compared to May

Chart 7: Furloughed workers by district



<https://www.gloscareershub.com/>