

Employment and jobs report for July 2021



<https://www.gloscareershub.com/>

Contents

- EMSI Jobs postings
- Types of jobs posted
- Top companies posting and skills required
- Claimant count
- Furloughed workers
- Gloucestershire Apprenticeship starts

EMSI LMI via Careers Coach

Please note that the Careers Coach tool which can be found at the Gloucestershire Skills Portal also utilises up to date EMSI LMI and job postings for Gloucestershire to support you when working with students to explore individual career types. To find out more visit:

<https://www.skillsportalglos.com/career-coach/>

To download an information sheet visit:

<https://drive.google.com/file/d/1JXDSDszS9tZseymiooWMzWjzzlCwThbw/view>

To book a demonstration of Careers Coach e-mail: education@gfirstlep.com

The screenshot shows the homepage of the Career Coach for Gloucestershire. At the top left is the gfirst LEP logo with the tagline 'growing gloucestershire'. To the right are links for 'Search', 'Login', and a 'Sign Up' button. Below the logo is a navigation menu with 'Assessment', 'Careers', and 'CV Builder'. The main heading reads 'Welcome to Career Coach for Gloucestershire' with a sub-heading 'With live Gloucestershire and national labour market information brought to you by Emsi'. There are two main content boxes: 'Take Career Assessment' which describes taking an assessment to learn about oneself and get career suggestions, and 'Browse Careers' which describes searching for careers and receiving data on wages, employment, and training. A green button labeled 'Take the Assessment' is visible at the bottom of the first box, and a search bar is visible at the bottom of the second box.



Headlines from July 2021 figures



- The Claimant Count in Gloucestershire decreased by 150 persons to 14,060 and the rate decreased to 3.6%
- Job posting numbers for the month of July were around 36,280 which is an increase of around 1,995 job postings when compared to June
- Provisional data shows total number of workers furloughed in Gloucestershire as at the 31st July was 12,600 which is down from the June figure of 15,100
- To date Gloucestershire has seen a cumulative total of 113,200 employments supported by the Coronavirus Job Retention Scheme at various times



EMSI job posting numbers



- Job posting numbers for the month of July 2021 were around 36,280 which is an increase of around 1,995 job postings when compared to June 2021.
- Chart 1 below gives a district overview of total jobs for the month of July, comparing the same month in 2019, 2020 and 2021.
- For Cotswold, Forest of Dean and Tewkesbury, the number of jobs posted in July 2021 exceeds the same month for previous years.



EMSI job posting numbers

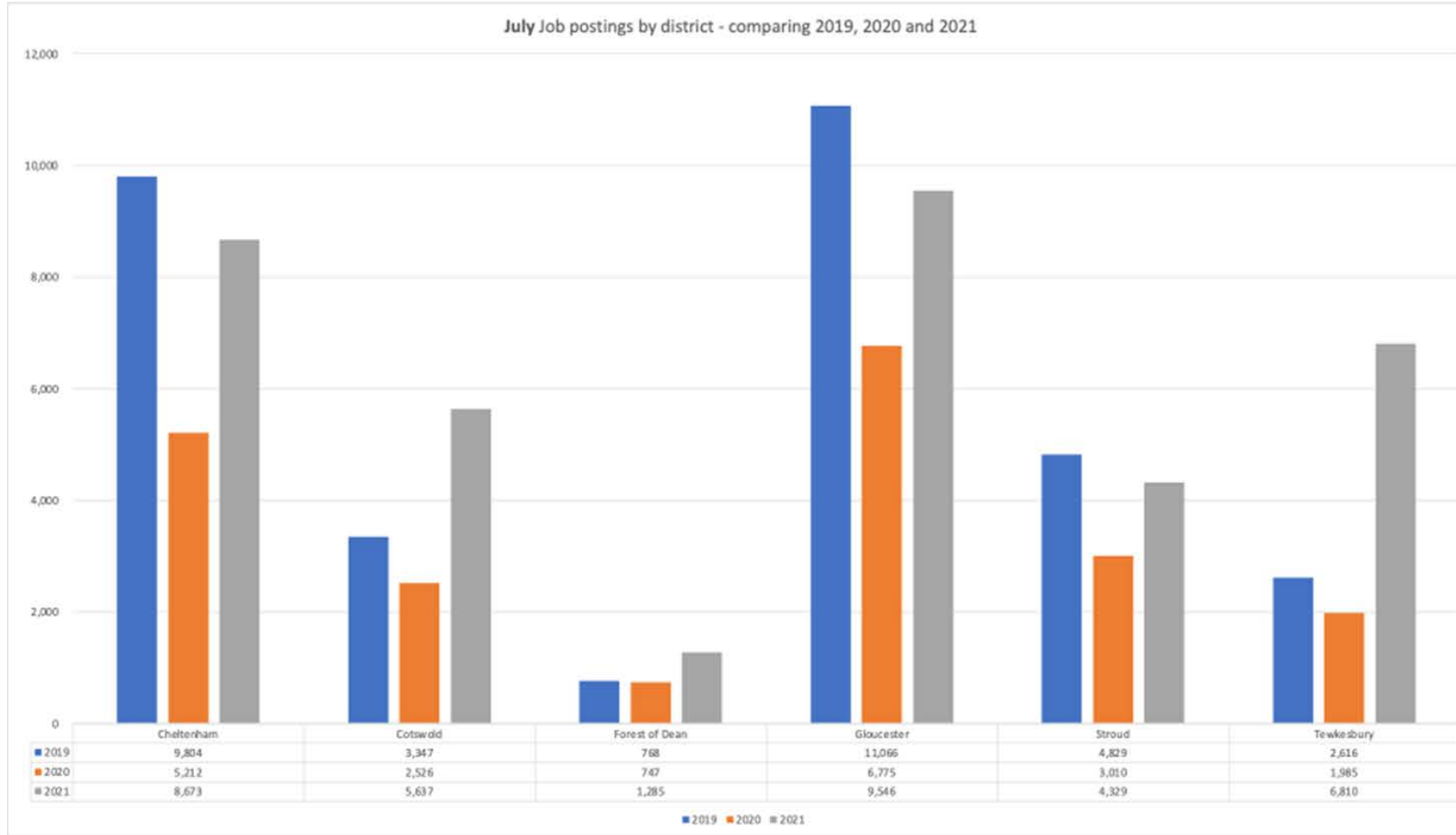


Chart 1: District overview of total jobs in July 2021 when compared with July 2020 and July 2019



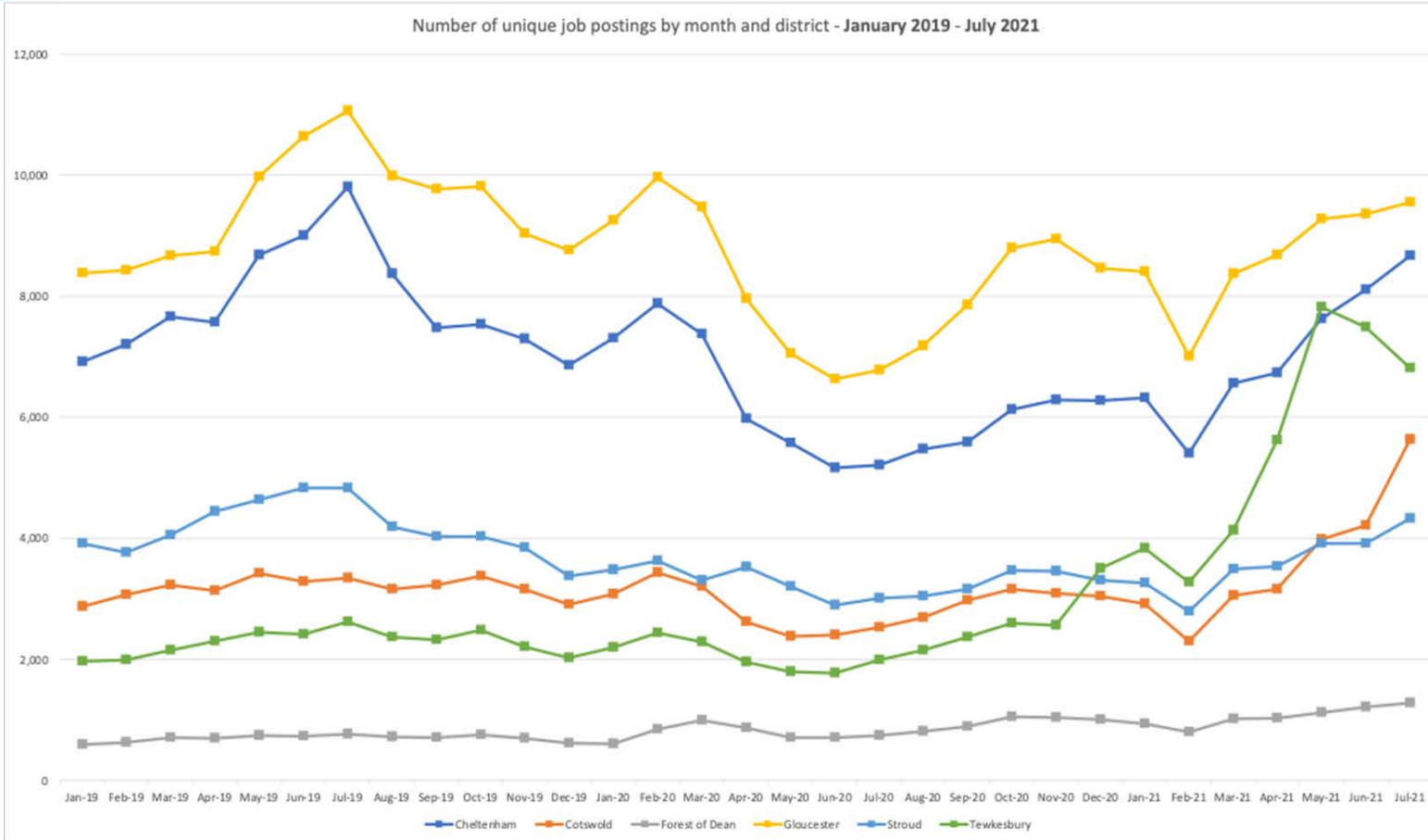
EMSI job posting numbers



- Chart 2 below shows total jobs by district from January 2019 to July 2021, with most districts displaying a similar trend over the past few months.
- However, Tewkesbury job posting numbers have dropped back slightly again for the for the second consecutive month.



EMSI job posting numbers



Please note – job posting numbers are based on snapshot data taken on the 24th August numbers are provisional and subject to change. The information is continually being cleaned and validated, but job posting numbers provide a good indication on how the job market is performing.

EMSI delivers real time access to job vacancies from a comprehensive range of sources including job boards, employer sites, newspapers, public agencies etc. Data extraction and analysis technologies mine and code data from each job listing to provide analysis on industries, occupations, skills and qualifications. However, the tool will inevitably not capture all vacancies.

Source: EMSI

Chart 2: Number of job postings by district for the past 12 months



Types of jobs posted



- Chart 3 below shows the net change in the number of job postings by top level occupation (two-digit SOC), comparing June to July 2021.
- As can be seen below, most occupations have seen an increase in July when compared to the previous month, but there have also been a number of decreases mostly in Teaching and Education professionals, but also in Business, Media and Public Service Professionals and Culture, Media and Sports Occupations.



Types of jobs posted

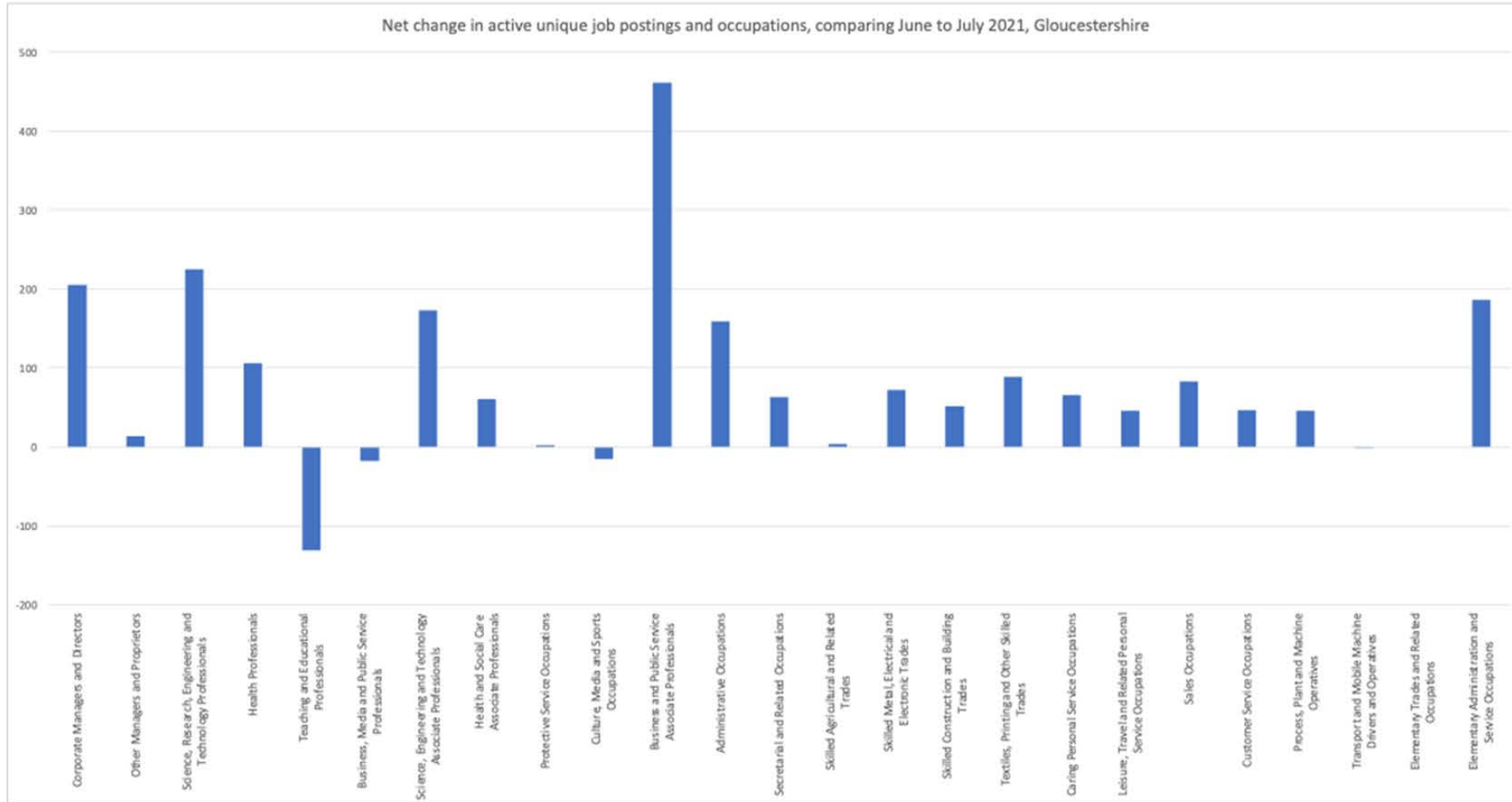


Chart 3: Net change in the number of job postings by two-digit (SOC) code, comparing July 2020 and July 2021.



Top companies posting and skills required (July 2021)



- **The top companies posting jobs in July include**; Gloucestershire Hospitals NHS Foundation Trust, NHS and Gloucestershire County Council – please note that we have not included employment agencies in top companies posting, employment agencies do however form part of the total jobs posted in the report.
- **Top posted occupations in July**: Programmers and software development professionals, Nurses, Care workers and home carers, and Sales accounts and business development managers.
- **Top posted job titles** include; Support Workers, Care Assistants, Warehouse Operatives, Registered Nurses, and Production Operatives.
- **Top hard skills** listed in job postings include; Finance, Nursing, Auditing, Warehousing and Agile Methodology.
- **Top common skills** listed include; Communications, Management, Customer Service, Sales and Enthusiasm.



July Claimant Count



- August saw the publication of the July *Claimant Count figures: Gloucestershire has seen a decrease to 3.6% (the value is expressed as a proportion of residents aged 16-64). The July total now stands at 14,060 compared to the June figure of 14,210 which is a monthly decrease of 150 persons. All districts saw a decrease in the estimated number of unemployed claimants, except Forest of Dean district which saw an increase.
- The July figure for the South West was 4.0%, England was 5.5% and the UK figure was 5.4%.
- Chart 4 shows the claimant rate for July 2021 in Gloucestershire



July Claimant Count

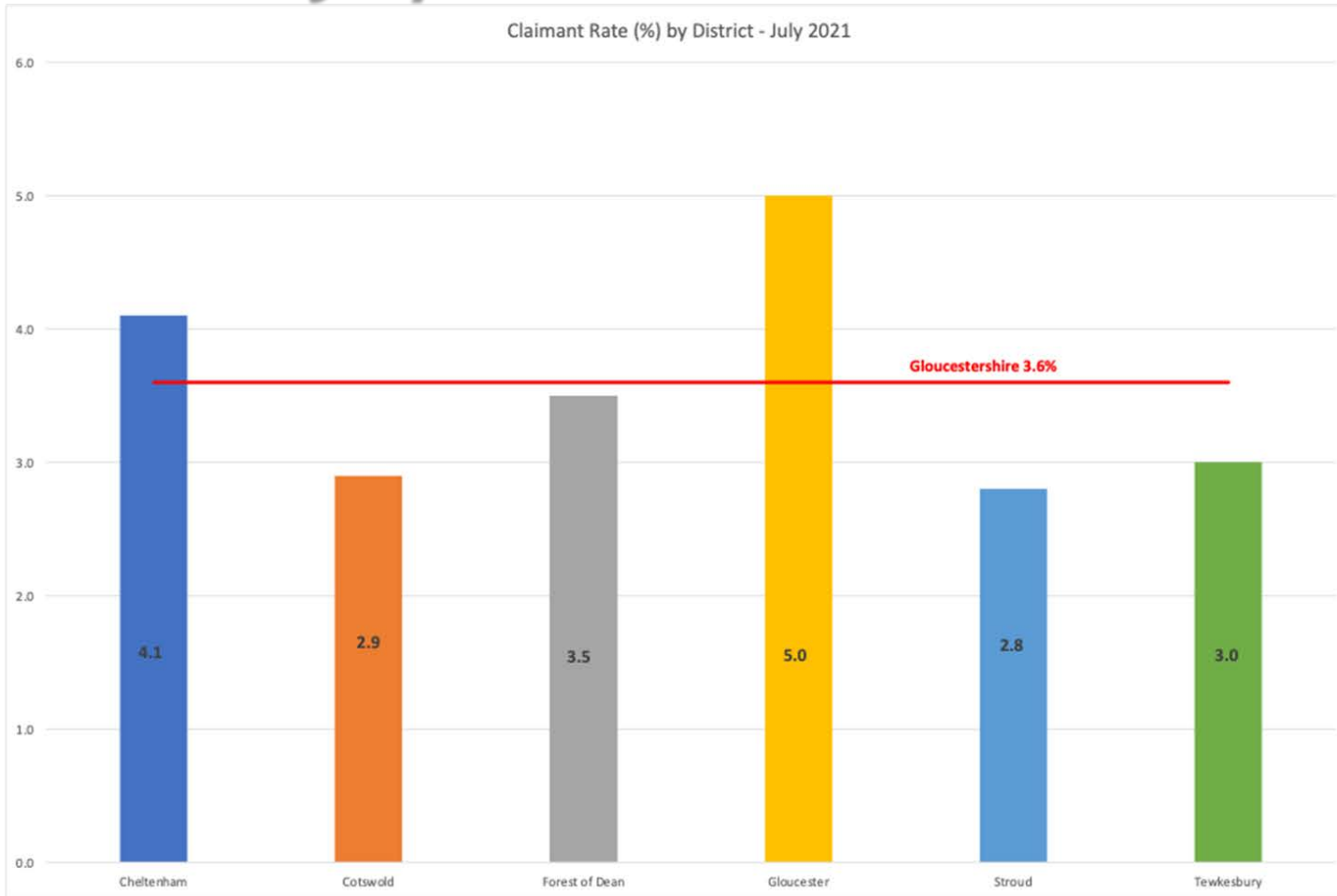


Chart 4: Claimant rate for July 2021 in Gloucestershire



July Claimant Count



- Chart 5 shows the current claimant rate for Gloucestershire at 3.6%, when compared with all six districts, the South West and United Kingdom.
- The rate for Gloucestershire continues to be below that of the UK and South West.



July Claimant Count

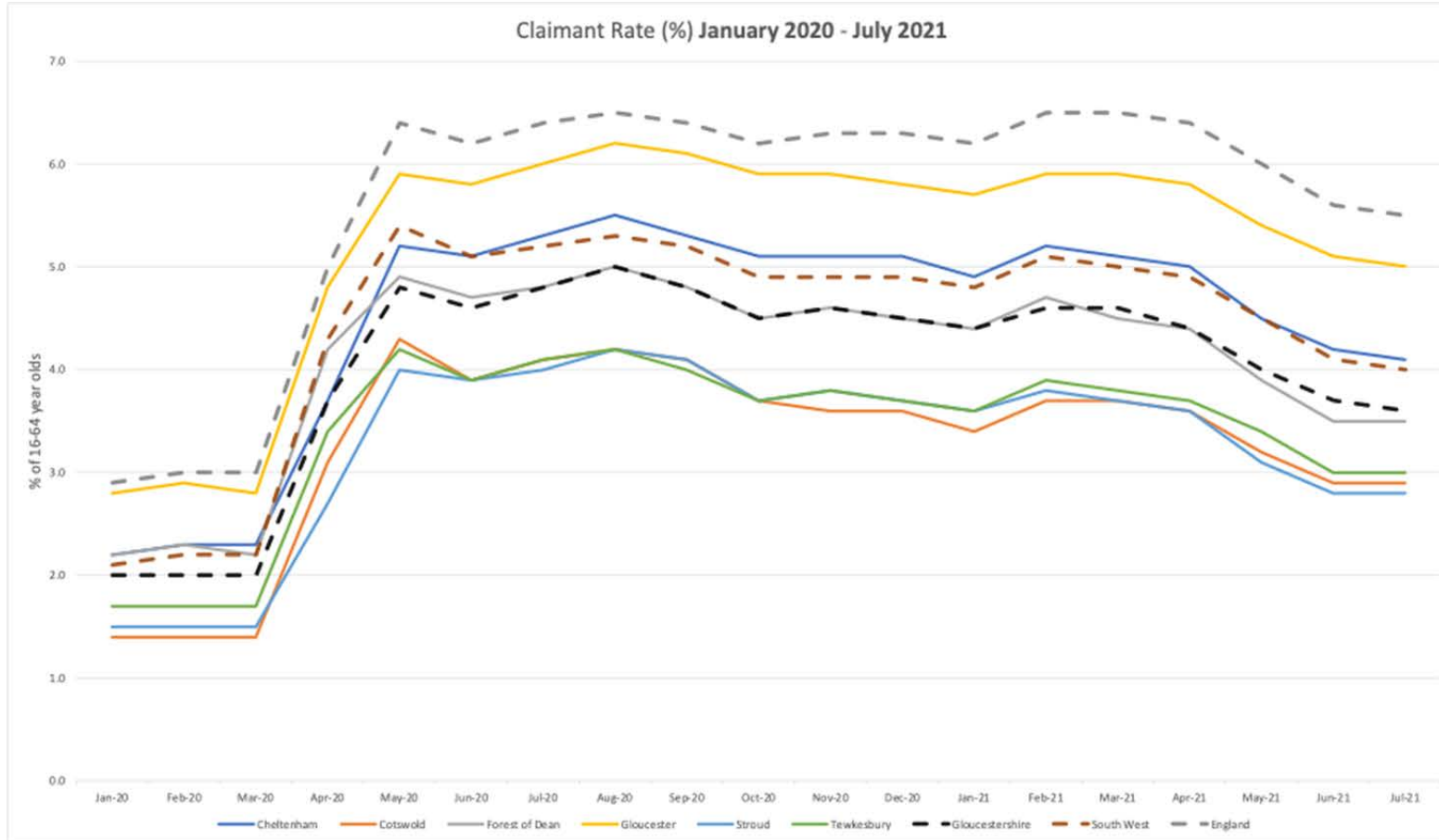


Chart 5: Claimant rate for July 2021 in Gloucestershire compared with South West and UK



Furloughed workers



- Provisional data shows total number of workers furloughed in Gloucestershire as at the 31st July was 12,600 which is down from the June figure of 15,100.
- Also updated this month were the cumulative number of jobs furloughed since the start of the scheme in March 2020, which has now seen a cumulative total of 113,200 Gloucestershire employments supported by the CJRS at various times.
- Chart 5 below shows the district breakdown of workers furloughed at the end of July.



Furloughed workers

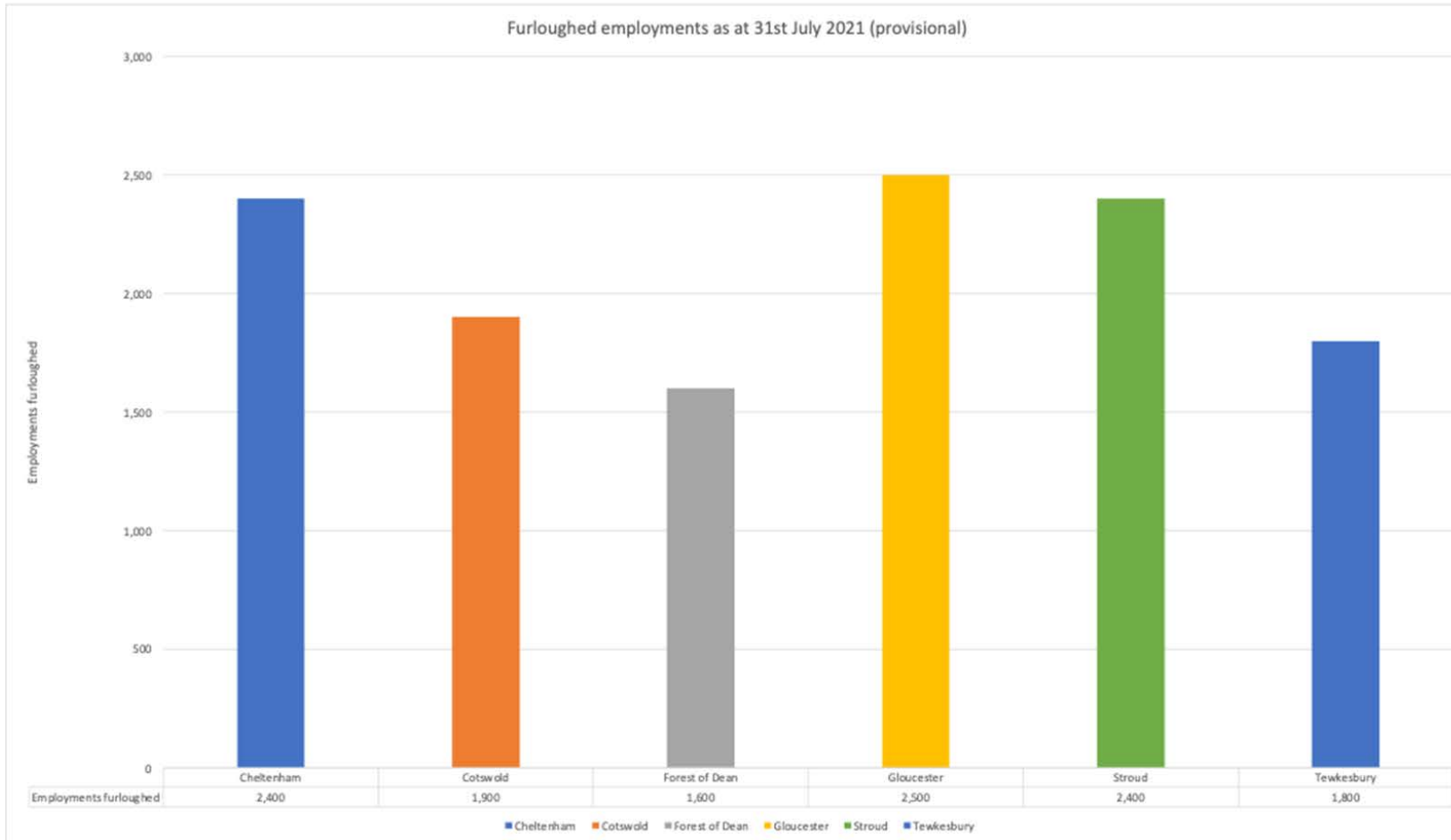


Chart 5: Furloughed employments as at 31st July 2021



Furloughed workers

- Table 2 below compares the July furlough statistics for Gloucestershire against England and the South West

Furloughed employments as at the 31 st July 2021 (provisional)			
Area	Employments furloughed	Eligible employments	*Take-up-rate
Gloucestershire	12,600	275,700	5%
South West	105,700	2,369,400	4%
England	1,314,400	23,881,800	6%

**Take up rate is the percentage of workers furloughed, as a proportion of those eligible employments.*

Table 2: Furloughed statistics for Gloucestershire compared with England and South West as at 31st July 2021



Furloughed workers

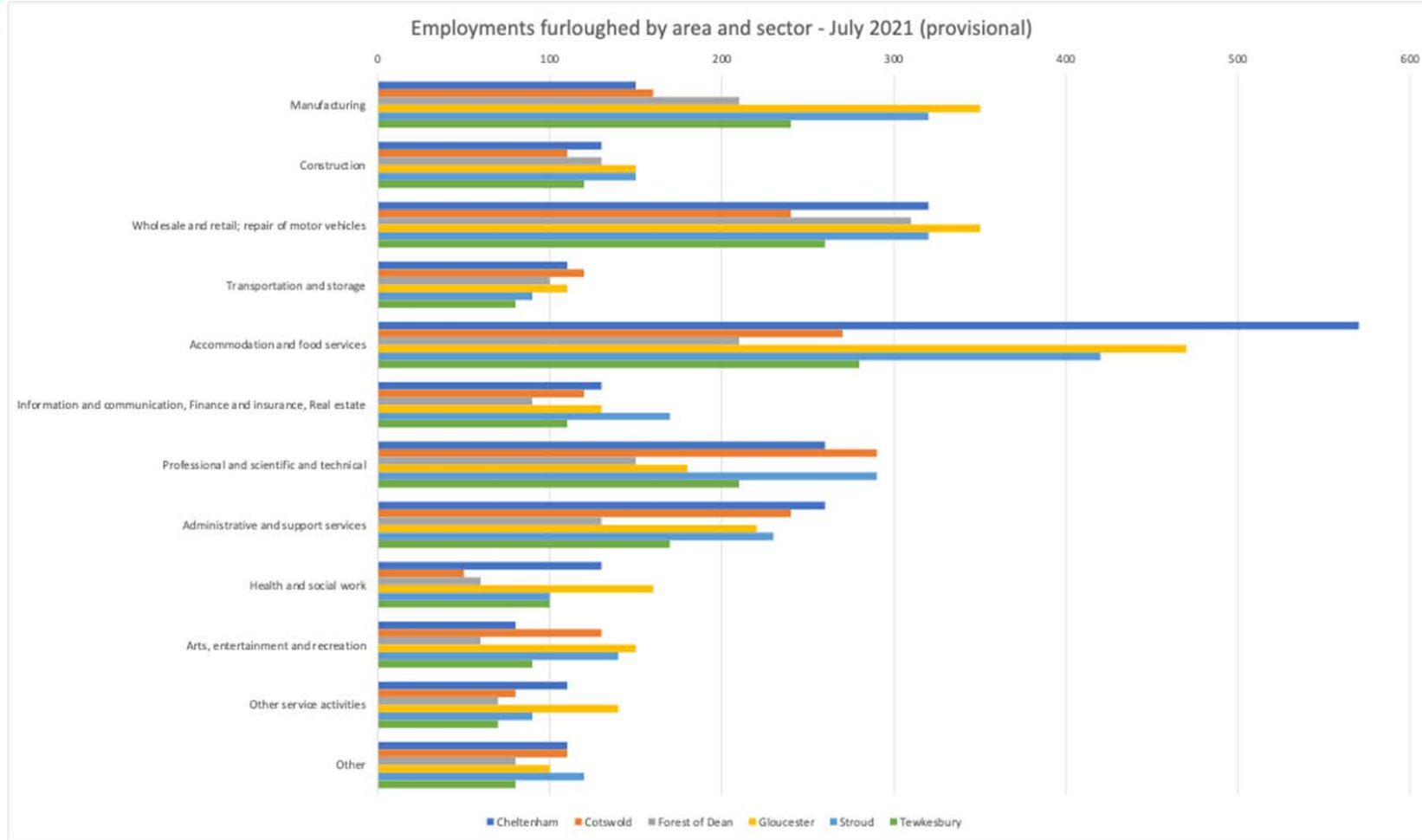


Chart 6 displays the number of furloughed workers by broad sector and by area as at the end of July 2021. The accommodation and food services sector continues to see some of the largest numbers of furloughed employments but has seen an overall decrease of 630 compared to June figures.

Chart 6: Furloughed workers in Gloucestershire



Furloughed workers

Employments furloughed by LA and sector - July 2021 (provisional)	Cheltenham	Cotswold	Forest of Dean	Gloucester	Stroud	Tewkesbury	Gloucestershire
Manufacturing	150	160	210	350	320	240	1420
Construction	130	110	130	150	150	120	790
Wholesale and retail; repair of motor vehicles	320	240	310	350	320	260	1800
Transportation and storage	110	120	100	110	90	80	610
Accommodation and food services	570	270	210	470	420	280	2220
Information and communication, Finance and insurance, Real estate	130	120	90	130	170	110	740
Professional and scientific and technical	260	290	150	180	290	210	1370
Administrative and support services	260	240	130	220	230	170	1250
Health and social work	130	50	60	160	100	100	600
Arts, entertainment and recreation	80	130	60	150	140	90	640
Other service activities	110	80	70	140	90	70	560
Other	110	110	80	100	120	80	590

Table 3 shows the number of furloughed workers by broad sector and by district at the end of July 2021

Table 3: Furloughed workers in Gloucestershire



Furloughed workers



- Chart 7 Below compares the number of furloughed workers by sector and district, looking at the net change in furloughed workers in July compared to June.
- There continues to be a decrease in the number of furloughed employments across the majority of sectors, with the wholesale and retail; repair of motor vehicles and accommodation and food services sectors again both seeing the largest decrease. There has been a small increase (10) in Cheltenham in the Health and social work sector.



Furloughed workers

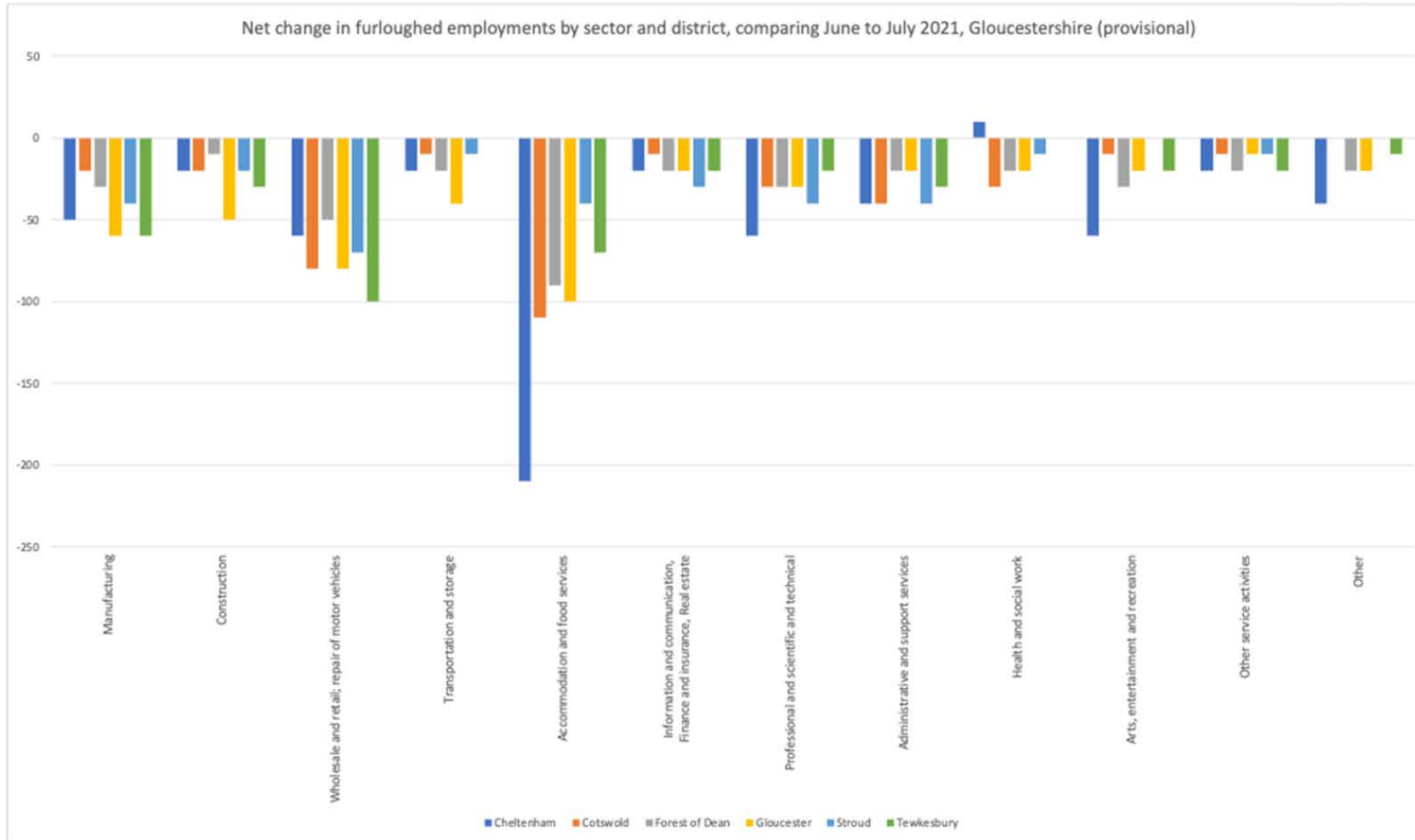


Chart 7 compares the number of furloughed workers by sector and district by looking at the net change in furloughed workers in July compared to June

Chart 7: Furloughed workers by district



Apprenticeship starts



- The following tables give an overview of apprenticeship starts in the county, by area and level over the past few years and are intended to illustrate the take-up of apprenticeships in the county



All apprenticeship starts since academic year 2015/16



Local Authority	2015/16	2016/17	2017/18	2018/19	2019/20	2020/21 Q2
Cheltenham	700	720	650	710	550	300
Cotswold	620	510	430	410	320	180
Forest of Dean	760	770	610	620	500	310
Gloucester	1,450	1,400	1,090	1,180	950	540
Stroud	920	880	760	730	590	340
Tewkesbury	680	650	610	680	560	310
Gloucestershire						
	5130	4930	4150	4330	3470	1980
England Total	509,400	494,900	375,800	393,380	268,700	161,900

Chart 8 N.B. Data are based upon the home postcode of the learner. England total includes apprentices with postcodes outside of England. Quarter 2 (Q2) of 2020/21 covers August 2020 to January 2021, and data is provisional and is subject to change

Chart xx: Gloucestershire Apprenticeship starts since 2015/16

Source: DfE Apprenticeships and traineeships data



Apprenticeship starts 2018/18 compared to 2019/20



Parliamentary Constituency	Total	2018/19-2019/20		By level			By age		
		Change on yr	% change	Intermediate	Advanced	Higher	Under 19	19-24	25+
Cheltenham	500	-120	-19%	160	210	120	120	150	230
Forest of Dean	530	-110	-17%	200	240	100	170	140	220
Gloucester	890	-230	-21%	280	400	210	220	210	460
Stroud	530	-130	-20%	190	210	130	160	150	220
Tewkesbury	650	-160	-20%	190	300	150	180	160	310
The Cotswolds	370	-120	-24%	120	160	90	100	130	150
Gloucestershire	3,470			1,140	1,520	800	950	940	1,590
South West	37,090	-6,830	-16%	12,710	16,050	8,340	9,230	11,380	16,480
England Total	268,700	-124,680	-32%	99,220	140,840	82,460	76,270	95,290	150,960

Chart 9 N.B. Data are based upon the home postcode of the learner. England total includes apprentices with postcodes outside of England. These figures are based on the geographic boundaries as of May 2010.

Chart xx: Gloucestershire Apprenticeship starts 2018/19 compared to 2019/20

Source: DfE Apprenticeships and traineeships data



<https://www.gloscareershub.com/>